

The steps and screenshots below show what is needed for the installation of the following SQL Server components:

SQL Server Installation on the Server Machine

1. [SQL Server 2012 Express Edition](#)

2. [SQL Server Management Studio](#)

Steps for SQL Server 2012 Express Edition Installation

1. Open the **EpiInfoCRC/Database/SQLServer2012Express** folder.
2. Open the installer for the SQL Server 2012 Express edition by double clicking on **SQLEXPRESS_x64_ENU.exe** file.

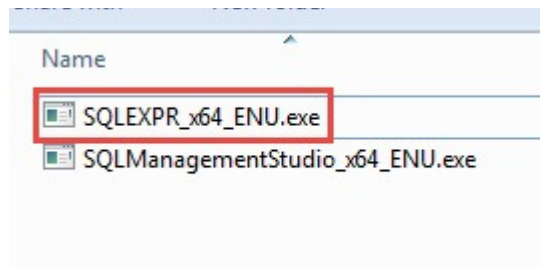


Figure 1: SQL Server 2012 Express installation program

3. In the SQL Server Installation Center, choose the menu item **New SQL Server stand-alone installation or add features to an existing installation**.

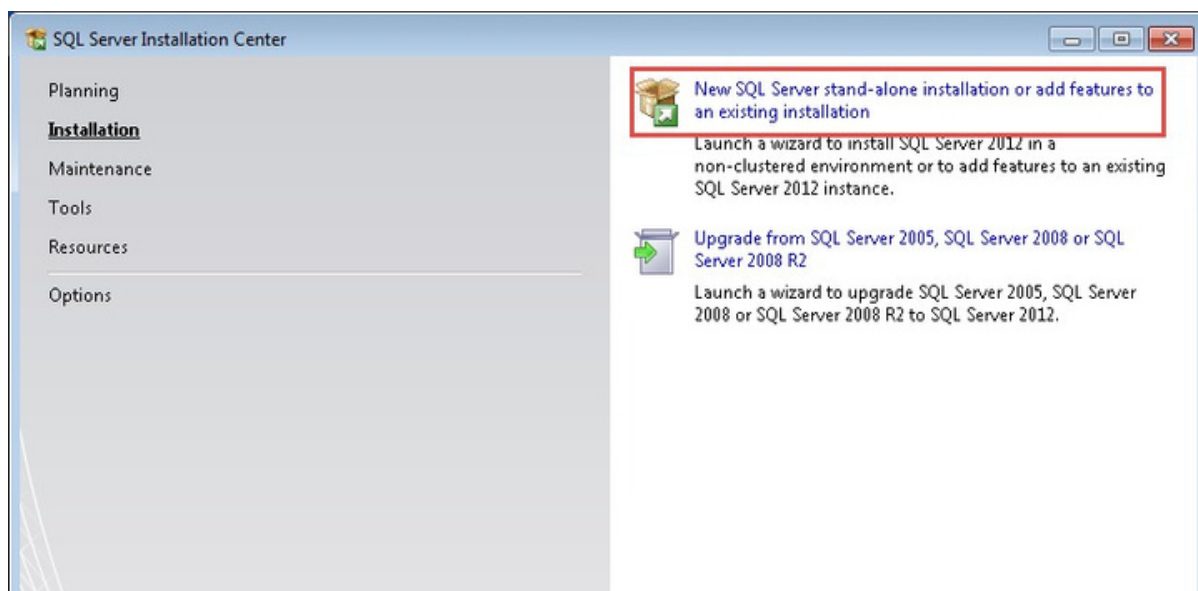


Figure 2: SQL Server Installation Center

4. Accept the License terms.

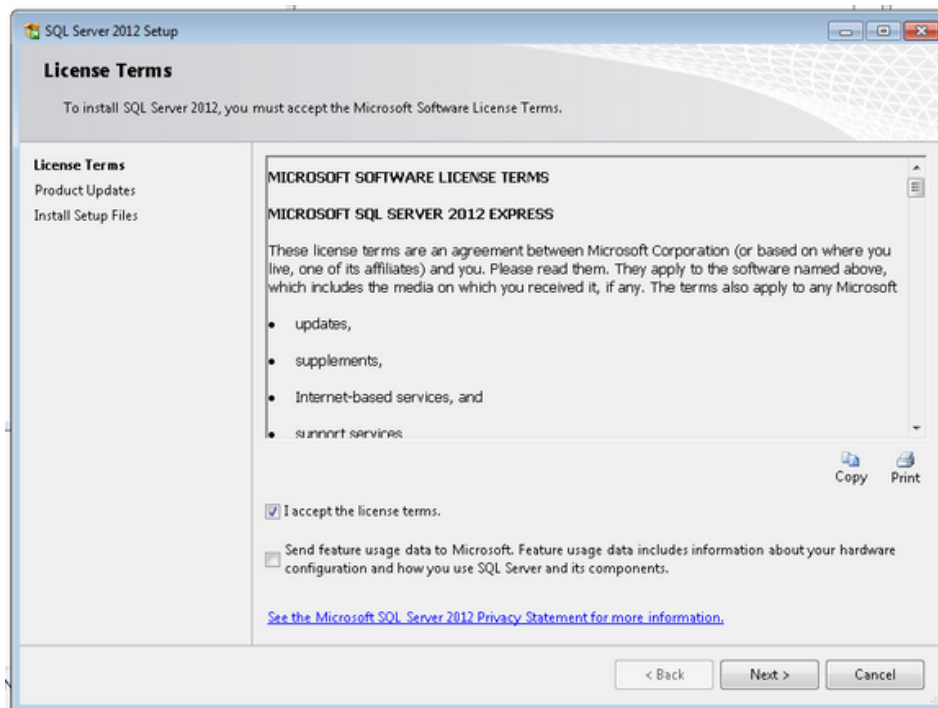


Figure 3: License Terms dialog

5. Ignore the SQL Updates for now. Our assumption is that this is being setup in a scenario with no Internet access and updates are not needed, therefore, just click **Next**.

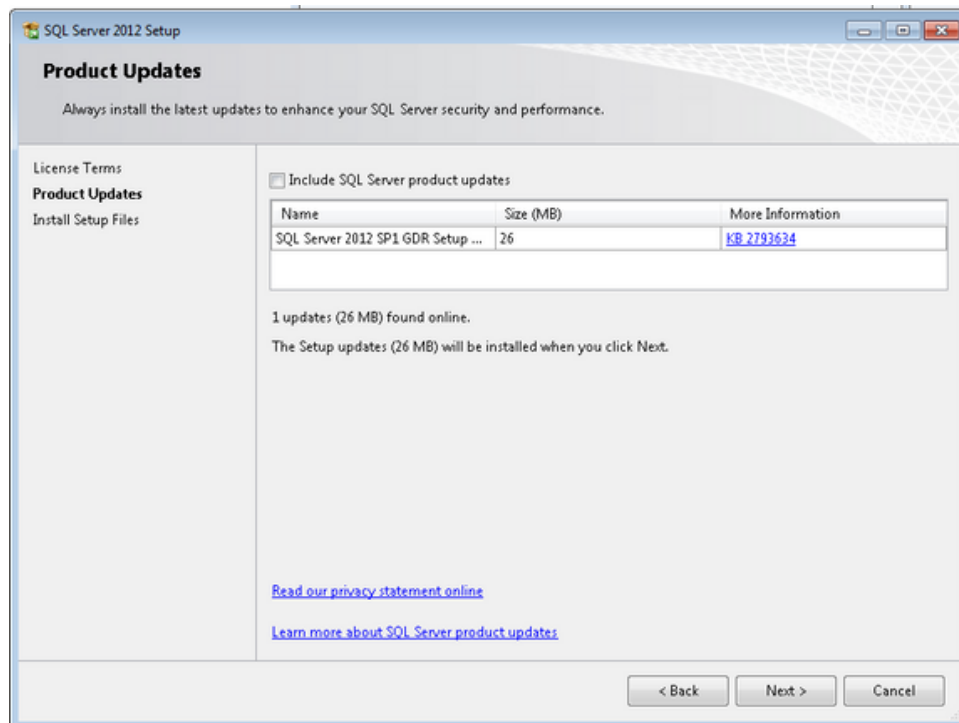


Figure 4: Product Updates dialog

- Leave the default feature selection as shown below and click **Next**.

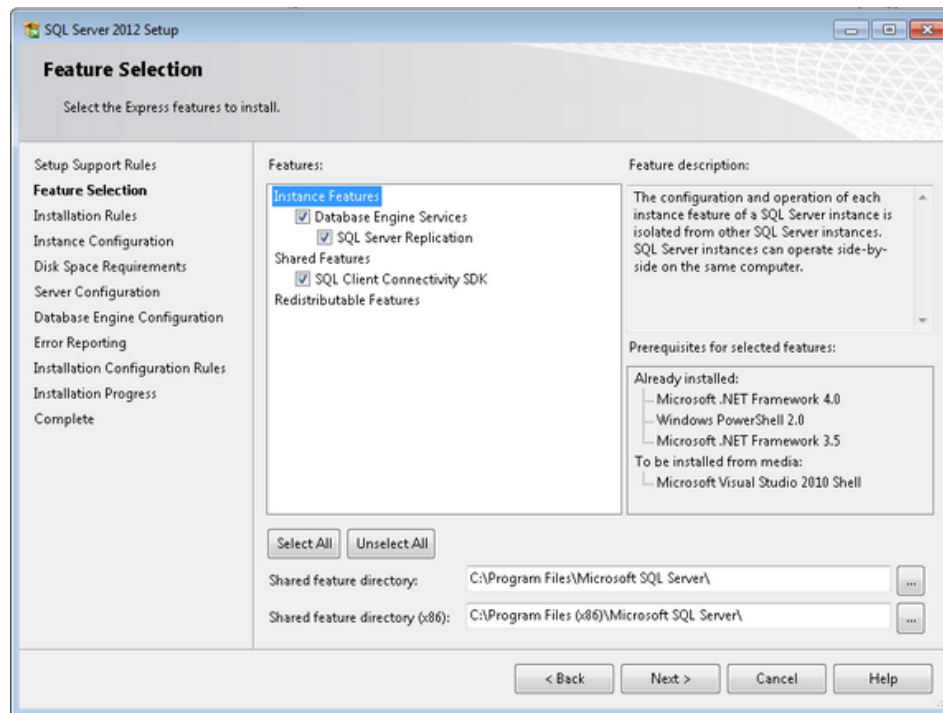


Figure 5: Feature Selection dialog

- This is the most important step.** Keep the Named Instance and Instance ID name to be the default Name: **SQLExpress**. **DO NOT CHANGE THESE NAMES.** Click **Next**.

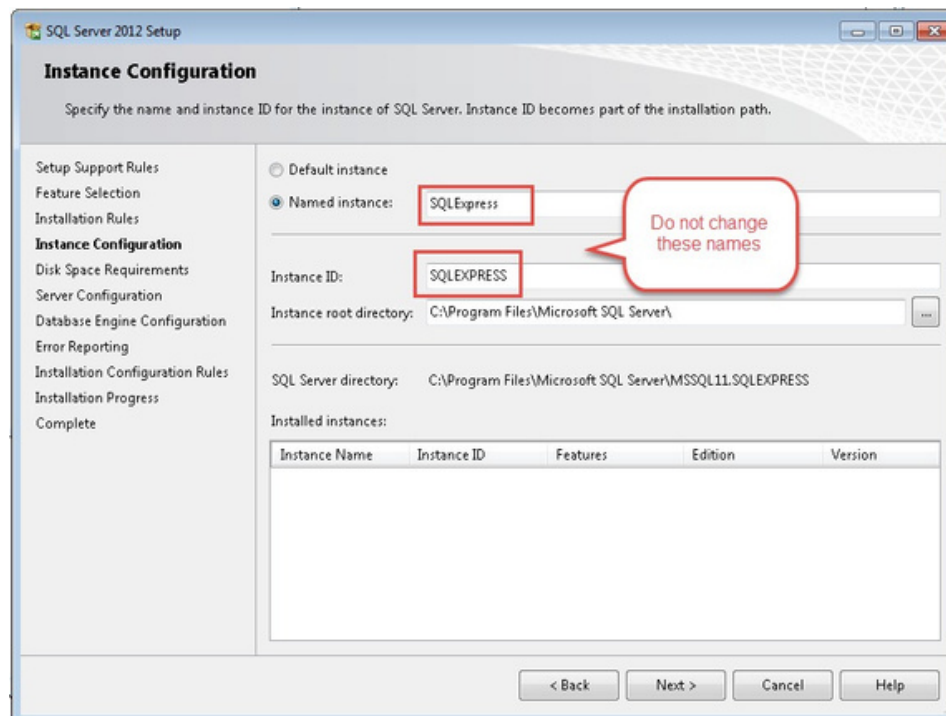


Figure 6: Instance Configuration – KEEP THE DEFAULT NAMES

8. Leave the default values for Server Configuration and click **Next**.

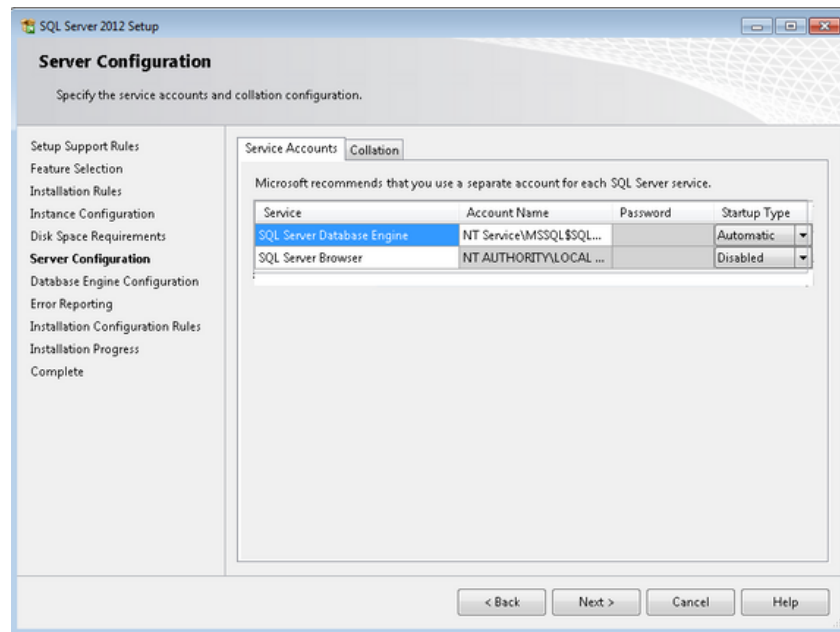


Figure 7: Server Configuration dialog

9. In Database Engine Configuration, choose **Mixed Mode** and provide a password for System Administrator (**sa**) account.

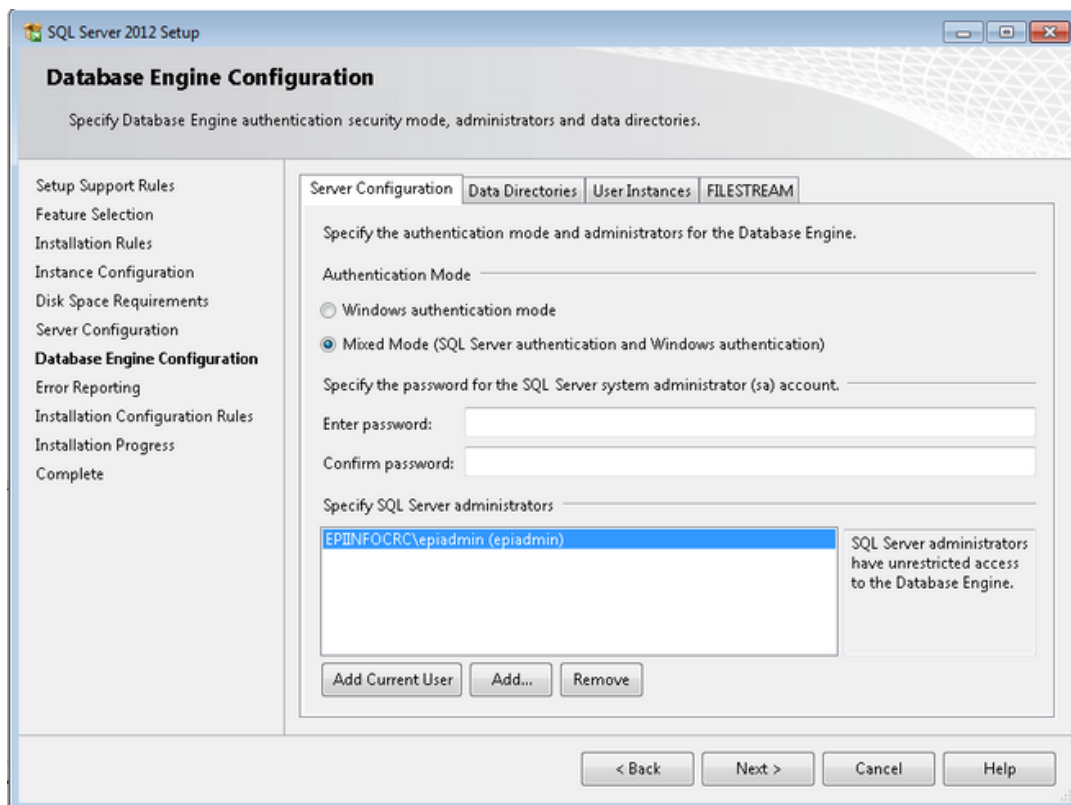


Figure 8: Database Engine Configuration dialog with Mixed Mode

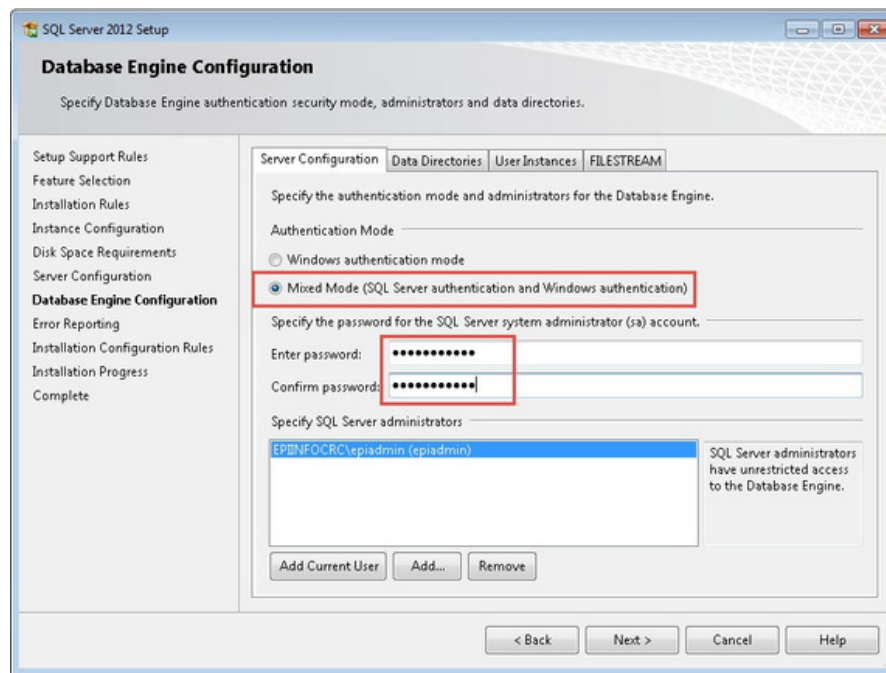


Figure 9: Database Engine Configuration dialog with System Administrator Password

10. On the Error Reporting dialog, click **Next**.

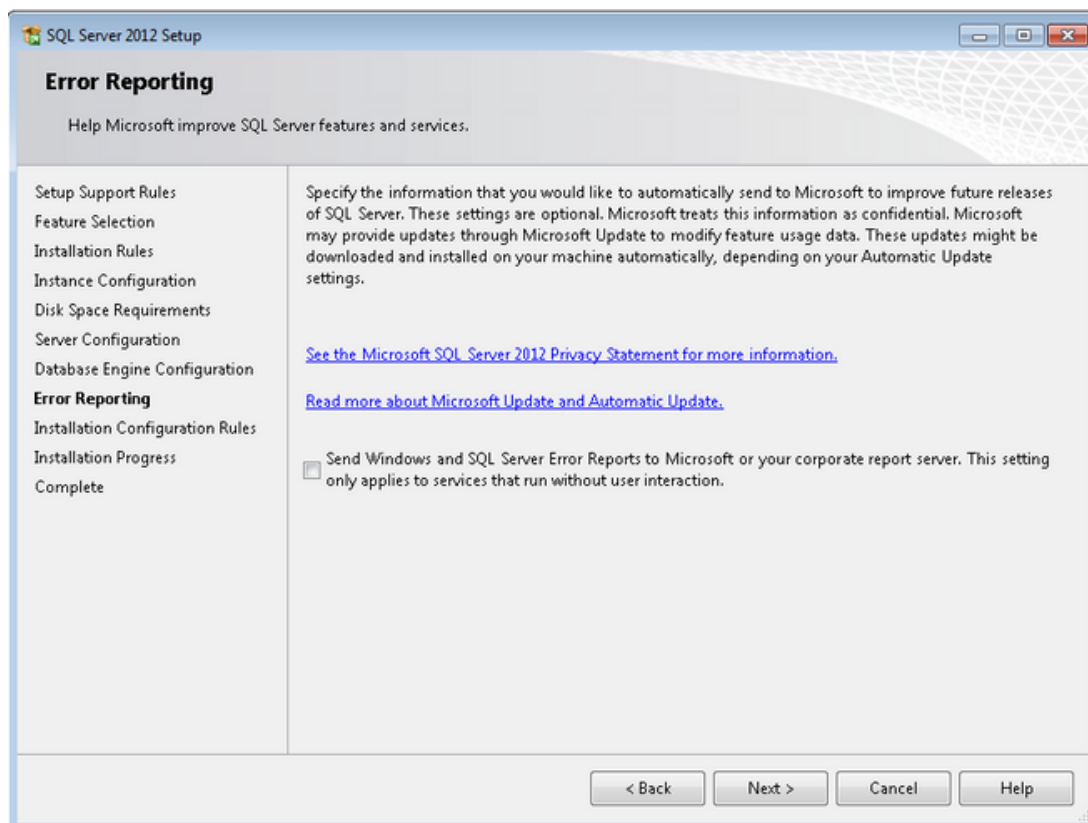


Figure 10: Error Reporting dialog

12. Successful installation of SQL Server 2012 Express will add **Microsoft SQL Server 2012** to the Programs list.

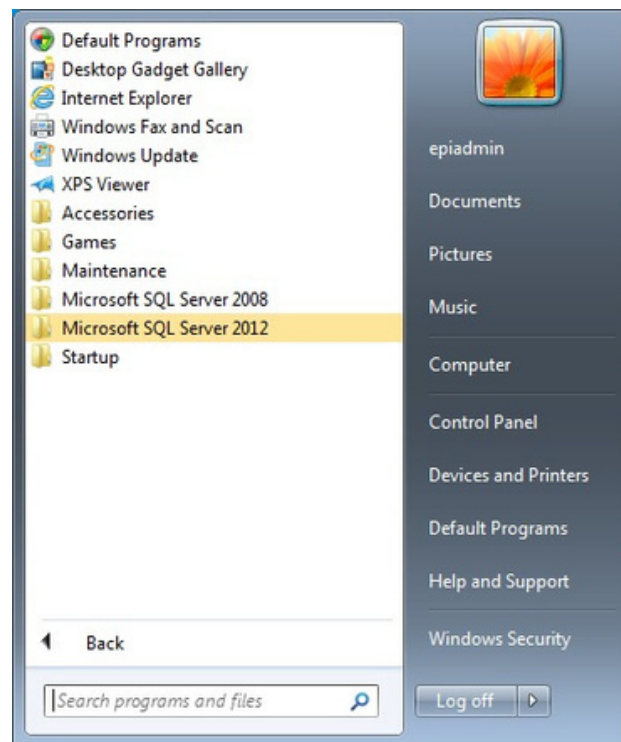


Figure 13: Microsoft SQL Server 2012 in the Start Programs list

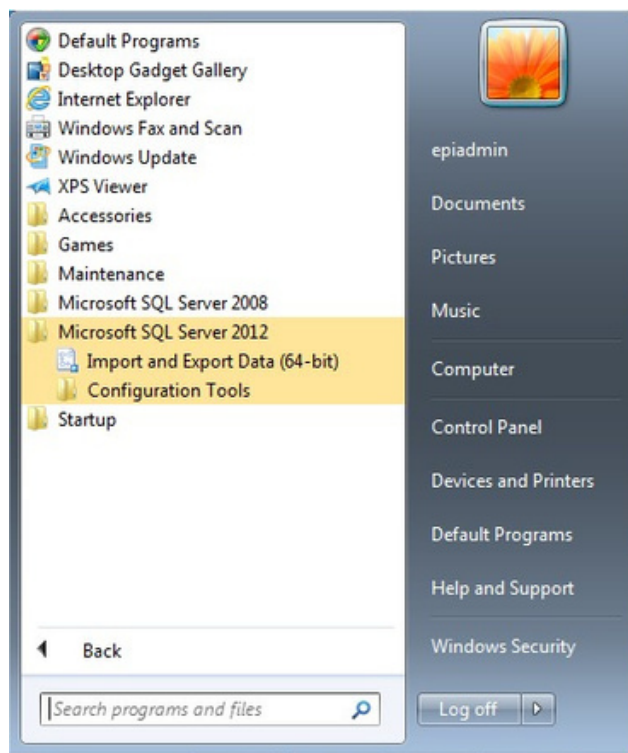


Figure 14: Expanded Microsoft SQL Server 2012 showing the sub-components

Steps for SQL Server Management Studio Installation

1. Open the **EpiInfoCRC/Database/SQLServer2012Express** folder.
2. Open the installer for the SQL Server Management Studio by double clicking on the **SQLManagementStudio_x64_ENU.exe** file.

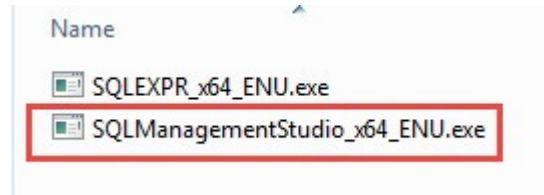


Figure 15: SQL Server Management Studio installation file.

3. In the installation menu item, choose **New SQL Server stand-alone installation or add features to an existing installation.**

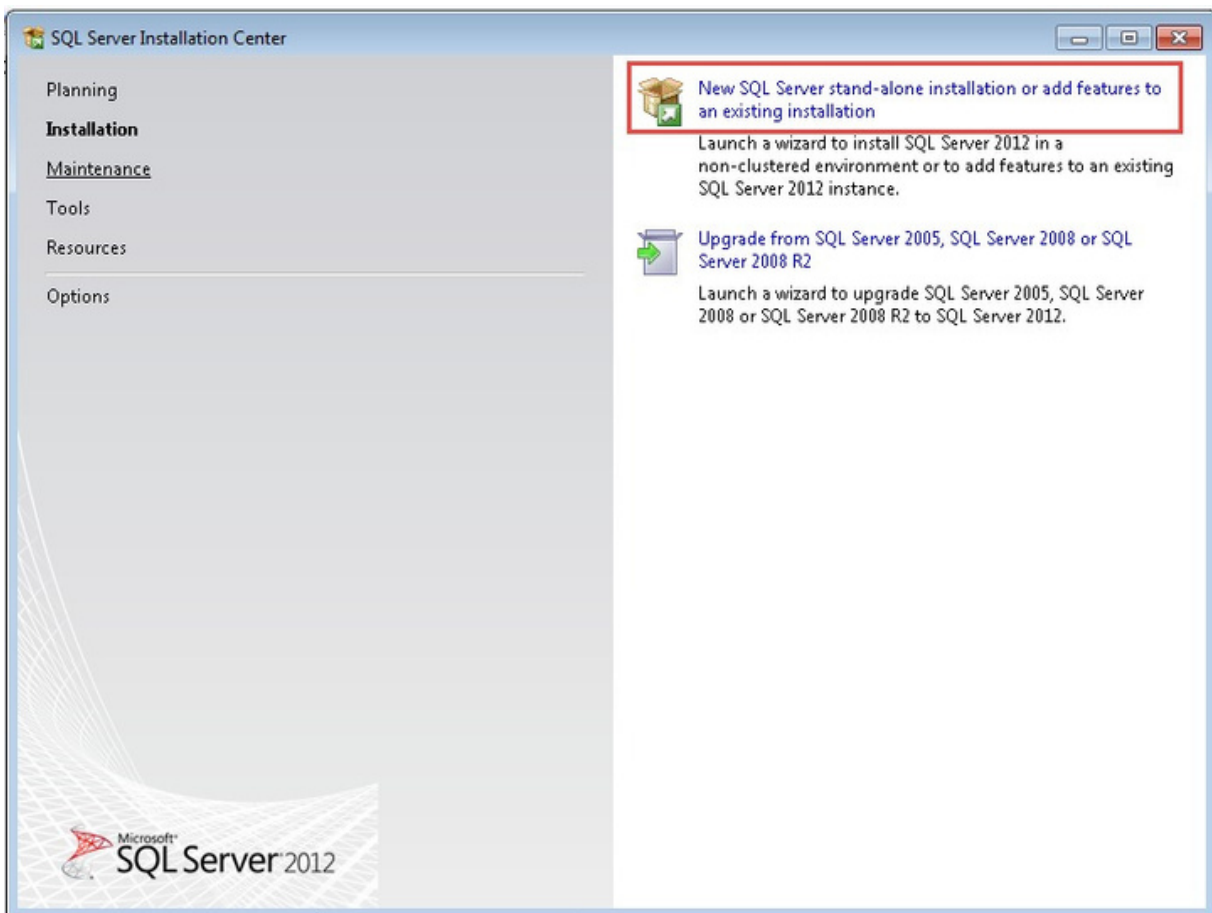


Figure 16: SQL Server Installation Center

4. Ignore product updates and click **Next**.

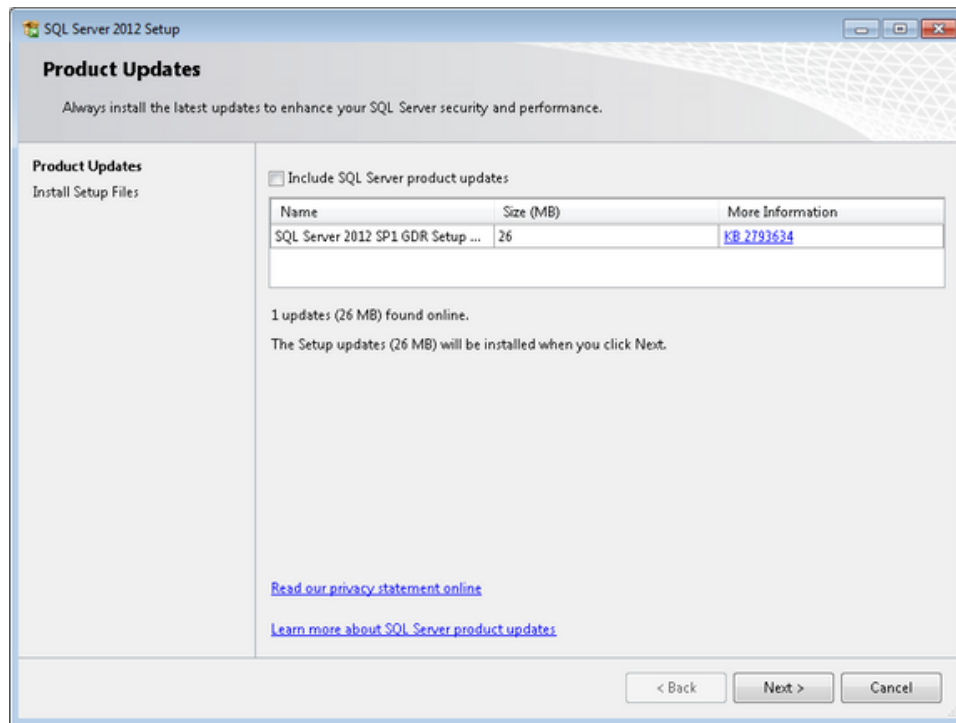


Figure 17: Product Updates dialog

5. On the **Installation Type** dialog, select **Perform a new installation of SQL Server 2012** and click **Next**.

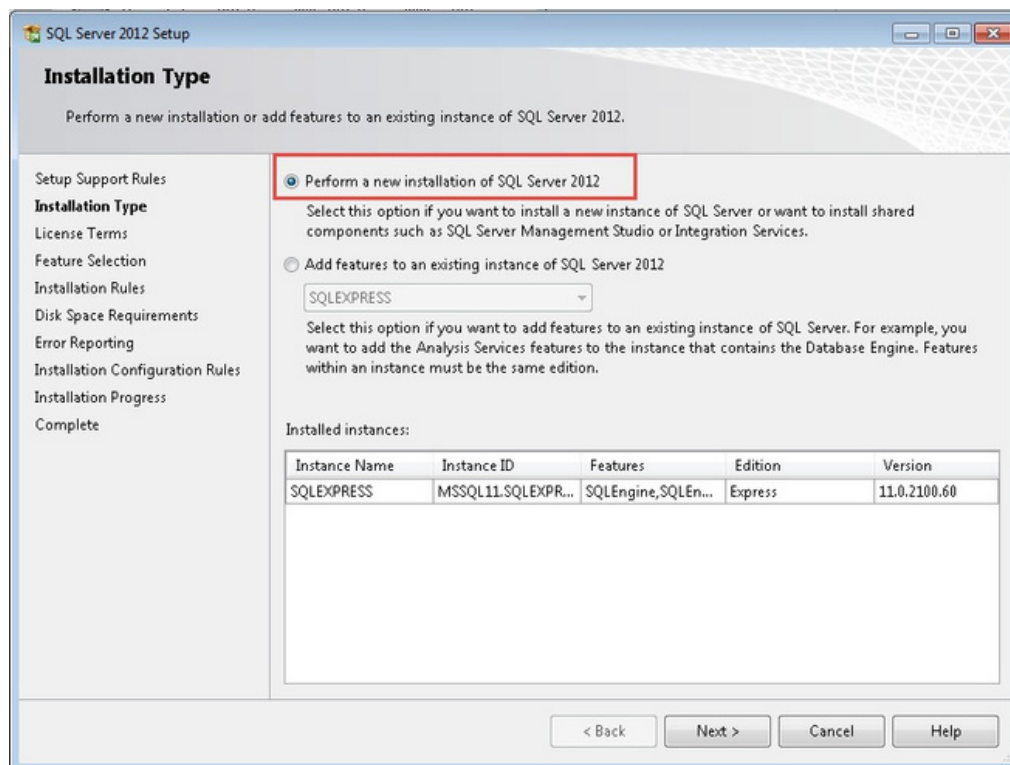


Figure 18: Installation Type dialog

6. Accept the license terms and click **Next**.

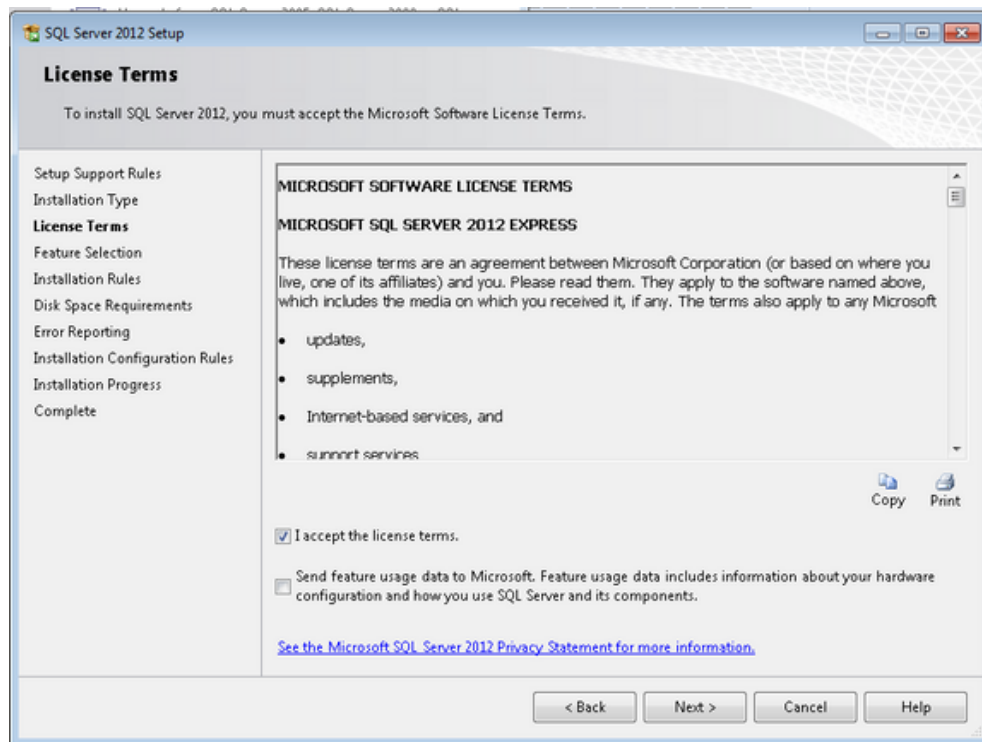


Figure 19: License Terms dialog

7. In the Feature Selection dialog, keep the default features as shown.

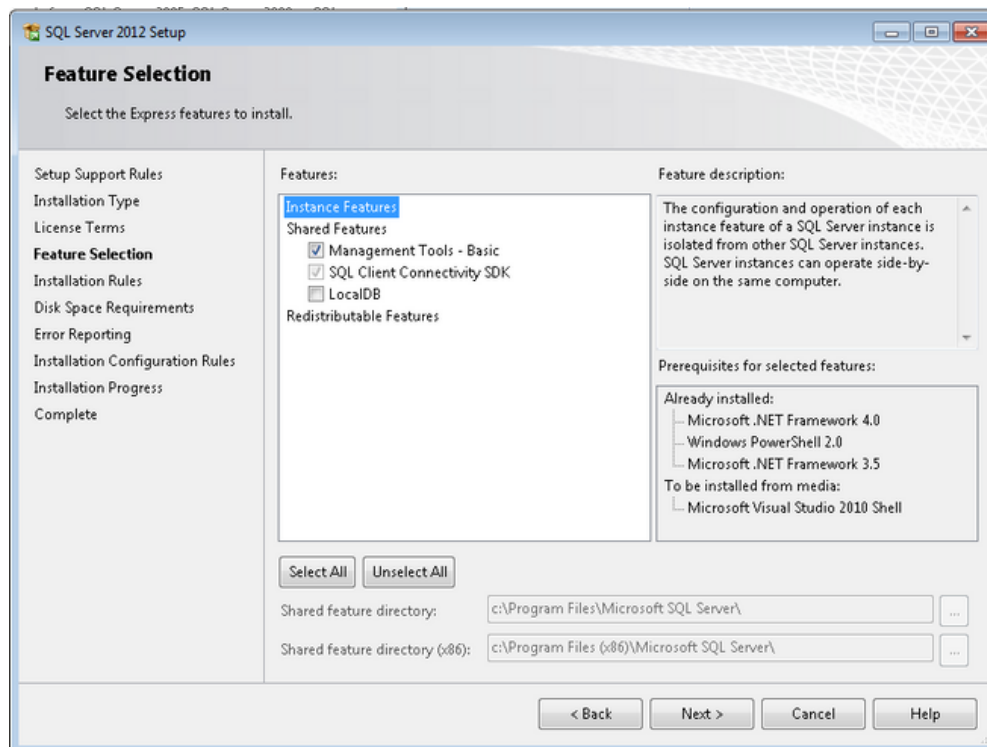


Figure 20: Feature Selection dialog

8. In the Error Reporting section, click **Next**.

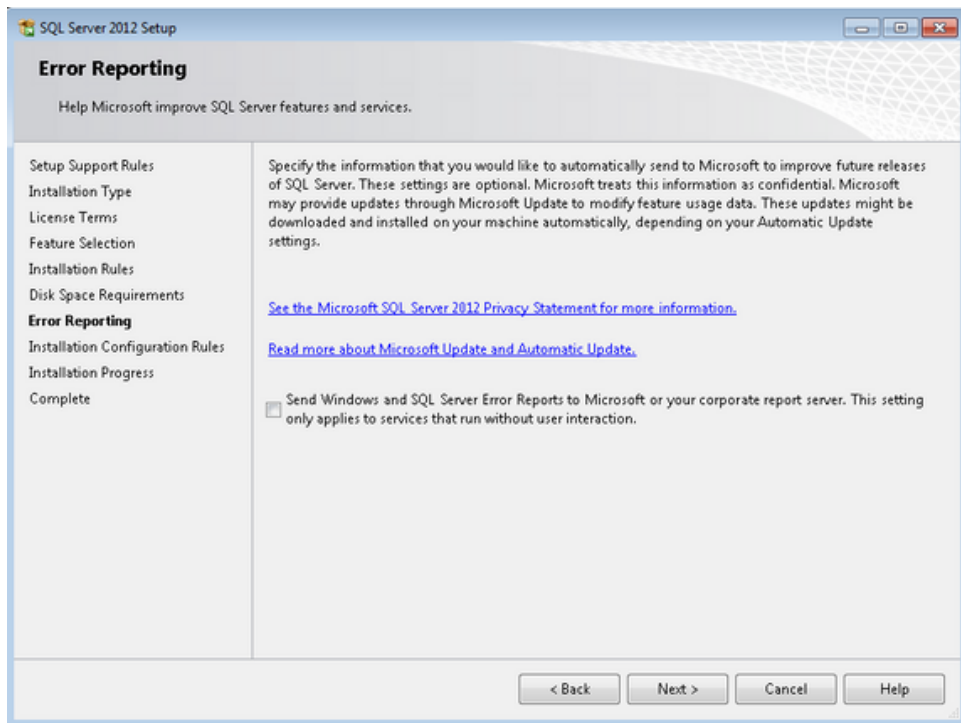


Figure 21: Error Reporting dialog

9. At this point, the SQL Server Management Studio installation should proceed and complete the installation.

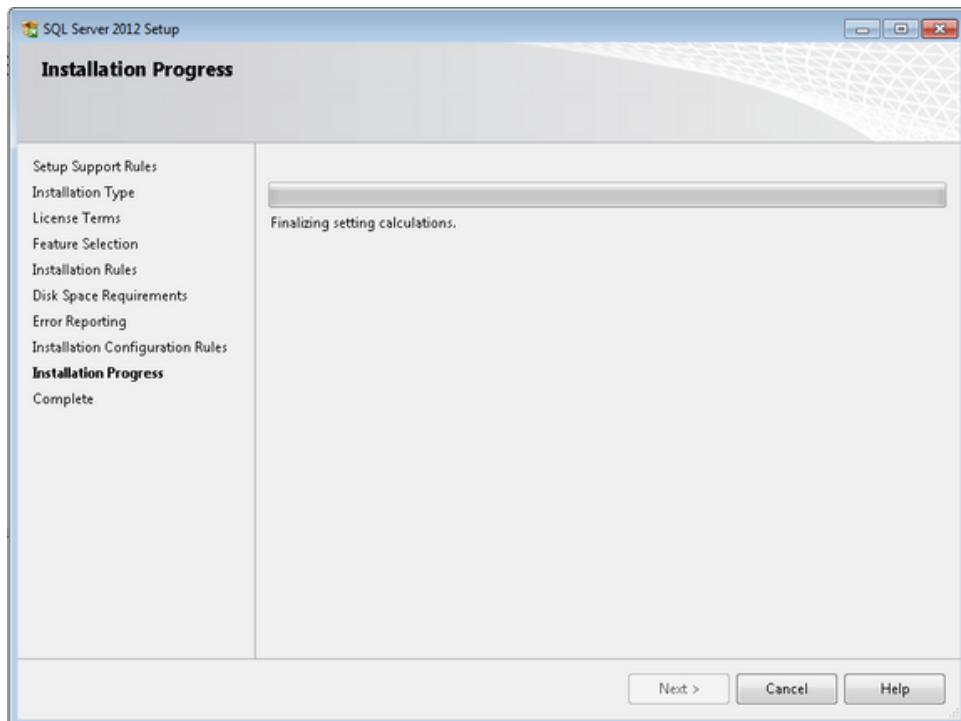


Figure 22: SQL Server 2012 Setup dialog

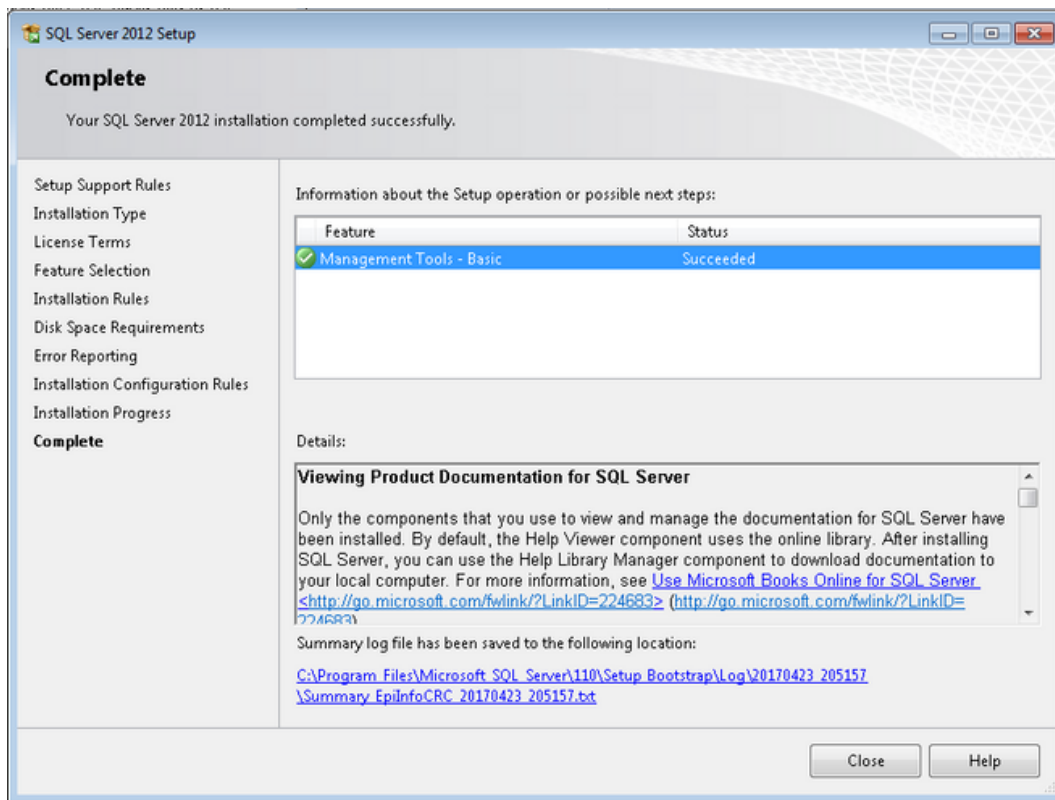


Figure 23: SQL Server 2012 Setup dialog completed

10. Successful installation of SQL Server Management Studio will add it to the Microsoft SQL Server 2012 Programs list on the Start Programs menu.

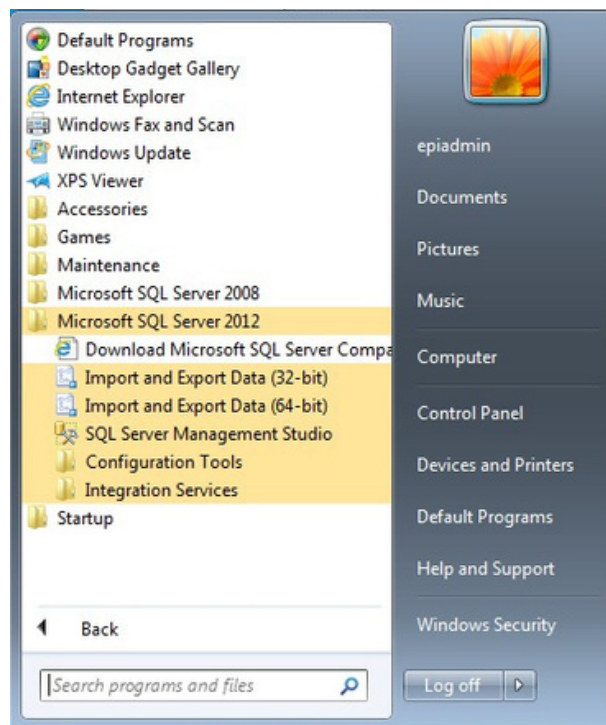


Figure 24: Expanded Microsoft SQL Server 2012 showing the sub-components

11. Confirm that the installation of SQL Server Management Studio was successful by launching it and logging in using either:

a. Windows Authentication, or

b. SQL Server Authentication using the 'sa' user name and the password you created for the 'sa' account.

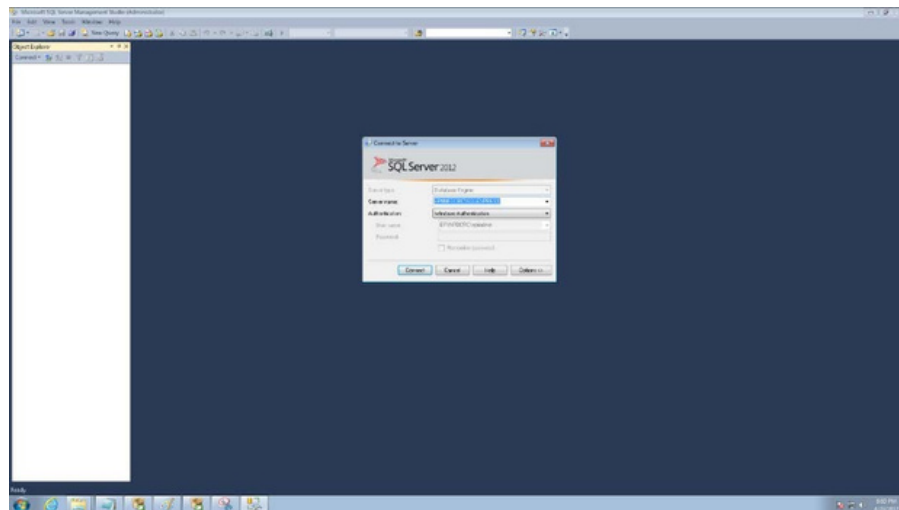


Figure 25: SQL Server 2012 Login dialog

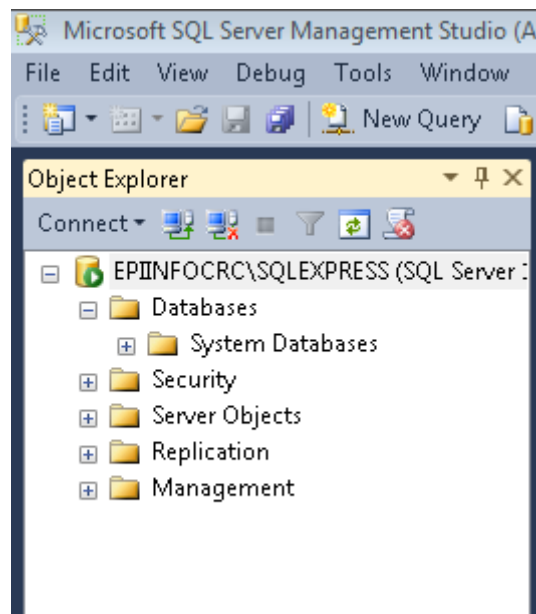


Figure 26: SQL Server 2012 Management Studio Object Explorer